

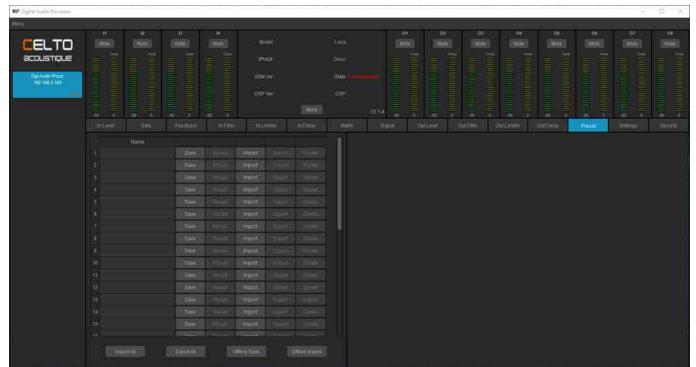
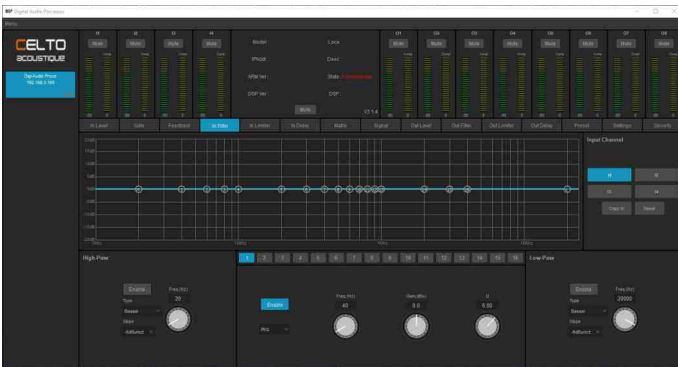
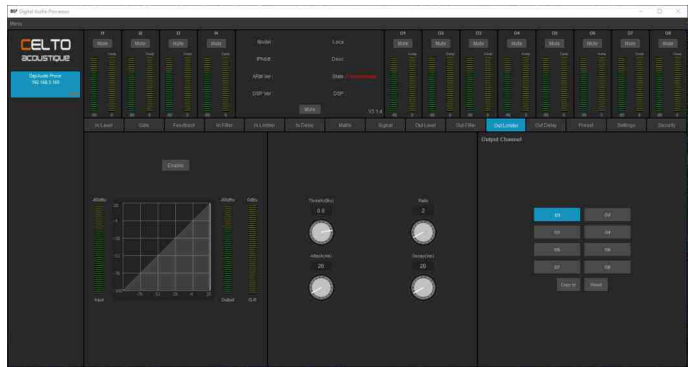
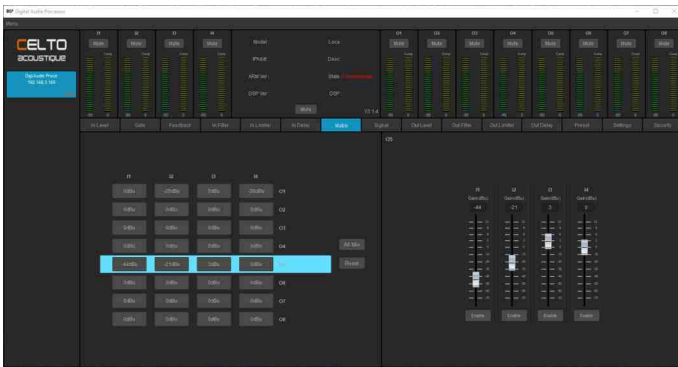
AT A GLANCE

CELTO Acoustique CLM48 is a comprehensive loudspeaker management system that offers high-end hardware, extended processing capacity and fully featured control software. With 192 parametric filters available and more than 6 km of total delay, CLM48 is ready to handle the most challenging projects. When paired with CELTO Acoustique amplifiers and speakers, CLM48 unlocks new territories of performance, thanks to the custom presets that use FIR filtering and Dynamic EQs .

MAIN FEATURES

- › 4 In x 8 Out Networkable Loudspeaker Management System
- › High precision 64-bit floating point Top-of-the-line SHARC DSP (96kHz sampling rate)
- › 24-bit D/A converters with 123dB dynamic range and audiophile grade preamps
- › 2 stereo AES/EBU Digital inputs
- › Features on each input:
 - Delay (300 meters per channel), Gain, Noise gate
 - Feedback Eliminator
 - 16 filters (selectable PEQ, Notch, Shelving, Allpass)
 - Compressor (Threshold, Attack, Release, Ratio)
- › Full Matrix mixer between Inputs and Outputs
- › Features on each output:
 - Delay (600 meter per channel), Gain
 - HPF and LPF filters (up to 48dB/oct, Linkwitz-Riley, Butterworth, Bessel)
 - 16 filters (selectable PEQ, Notch, Shelving, Allpass)
 - 2 Dynamic EQ per channel and 1024 tap FIR filters (only available on CELTO presets)
 - PeakStop and TrueRMS Compressor / Limiter (Threshold, Attack, Release, Ratio)
- › 32 preset memories with speaker preset management per output
- › Fine grained security policy system with lock/hide per function
- › 100MB RJ45 Ethernet interface compatible with common TCP/IP network equipment
- › CELTO DSP MASTER v3 control software for Windows platform
- › Standard 19" 1U rack space unit with universal power supply (100~250V AC 50~60Hz)

SOFTWARE



REAR PANEL



SPECIFICATIONS

Analog Inputs	4 female NEUTRIK XLR electronically balanced / RF filtered > 40kΩ Impedance +21dBu maximum input level 118dB A-weighted dynamic range A/D converters
Digital Inputs	2 stereo AES/EBU (switchable to analog on front panel UI and software)
Analog Outputs	8 male NEUTRIK XLR electronically balanced / RF filtered 120Ω Impedance +22dBu maximum output level 123dB A-weighted dynamic range D/A converters
Connectivity	100MB Ethernet (RJ45). Communication protocol based on TCP/IP
System Performance	96kHz sampling rate, 64-bit accumulators Frequency response of 20~20k Hz at -0.5dB THD+N lower than 0.001% at +4dBu, 1kHz, 0dB input Interchannel crosstalk >115dB
Power	100~250Vac / 50-60Hz / 35W max consumption PowerCon 3 pin
Size (WxHxD)	482x44.5x200mm net, 550x110x260mm gross
Weight	1.5kg net, 2.5kg gross